

Sanfield [India] Limited.

AN ISO 9001-2008 and CE CERTIFIED COMPANY



ARCHITECTURAL EXPANSION JOINT SYSTEM

THE COMPANY

SANFIELD (INDIA) LIMITED, a company serving the requirements of the Construction & Infrastructure sector from 1994 is now a Group Company of MAURER SE, an ENGINEERING Group of Companies in existence from 1876.

Sanfield (India) Limited is the exclusive designers, manufacturers and installers of a wide range of HIGH PERFORMANCE, SPECIALIZED CONSTRUCTION RELATED PRODUCTS, manufactured in Technical collaboration with various world renowned Companies.

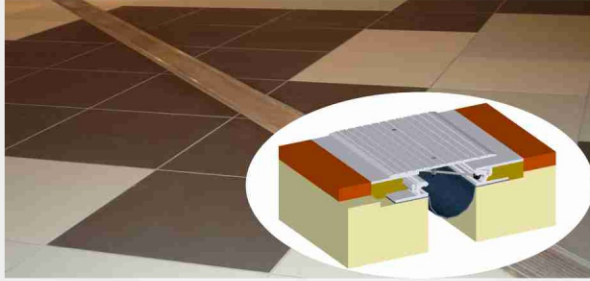
Sanfield (India) Limited with the assistance of its parent Companies and backed by the vast experience and expertise of various leading Companies of the world provides a single source responsibility from design, manufacturing, testing, material supply, installation and after sales services for all its product range. Accredited quality assurances and guarantees back up our products and services. The various products and services offered by Sanfield (India) Limited are:

- ◆ Bridge and Highways Expansion Joint System
- ◆ MAURER MSM Spherical Bearings (with Modified Low Friction Sliding Element), Anti Uplift Bearings & Elastomeric Bearings.
- ◆ Maurer Seismic Protection Systems (Lock-up Devices/Anti-Seismic Devices & Dampers) for use in Buildings & Bridges.
- ◆ Architectural Expansion Joint System for use in Buildings and other Applications.
- ◆ Sanfield POT/POT-cum-PTFE Bearings, with initial Technology Transfer from M/s Granor Rubber & Engineering Pty. Limited, Australia.
- ◆ ERICO Lenton Mechanical Rebar Splicing Systems (Bar Couplers) for use in Building and other infra projects.
- ◆ Prestressing and Post Tensioning Systems for Buildings & Bridges.
- ◆ Fabrication of Steel Girders (approved from Indian Railways / RDSO).
- ◆ Bridge Deck Waterproofing System.
- ◆ Gas Pressure Welding in association with DAIA Corporation, Japan.
- ◆ Speciality Product Division (SPD)

SANFIELD (INDIA) LIMITED is the ISO-9001:2008 and CE Certified company to have been approved by the Ministry of Road Transport & Highways for all the types of EXPANSION JOINTS SYSTEM without any restrictions on their movement capabilities and POT/POT-cum-PTFE STRUCTURAL BEARINGS and ELASTOMERIC (NEOPRENE) BEARINGS. We have also been approved by Research Designs & Standards Organization (R.D.S.O.), Government of India, Ministry of Railways for Bridge Bearings and Expansion Joins. We have supplied Expansion Joints & POT and POT cum PTFE Bearings to Bridge Contractors all over India, Nepal, Hong Kong, Thailand, Indonesia, Dubai and Afghanistan.

INTERNAL FLOOR EXPANSION JOINT SYSTEMS

SAPX- SYSTEM

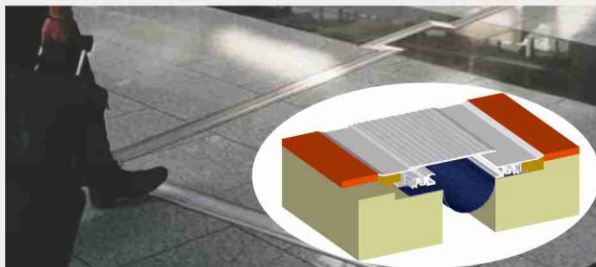


Dimension chart				
Model	Opening @Min	Opening @Mid	Opening @Max	Total Movement
SAPX-200	35mm	51mm	76mm	41mm
SAPX-400	35mm	102mm	151mm	116mm
SAPX-600	35mm	152mm	229mm	194mm
SAPX-800	35mm	202mm	305mm	270mm
SAPX-1000	35mm	252mm	351mm	316mm

The SAPX model comes with both surface mounted cover plate as well as recessed. Both slide and cover plates are available in aluminum and stainless steel options. The self-centering seismic devices allow the slide plate to return to its natural position after a seismic occurrence.

Features	Benefits	Recommended For
<ul style="list-style-type: none"> ➤ Multidirectional movement ➤ Accommodates wide openings ➤ Variable materials ➤ Design flexibility 	<ul style="list-style-type: none"> ➤ System maintains functionality during seismic events. ➤ Standard systems designed for joint openings up to 27 inches. ➤ Aluminum or stainless steel versions are available. ➤ Custom solutions can be created for job specific requirements. 	<ul style="list-style-type: none"> ➤ Malls, Hotels, Hospitals, residential buildings & Commercial Hub. ➤ Interior horizontal expansion control systems. ➤ For use in various construction projects including ➤ Convention centers with wider joint openings. ➤ Designs that require multi-directional seismic movement.

SFJX- SYSTEM

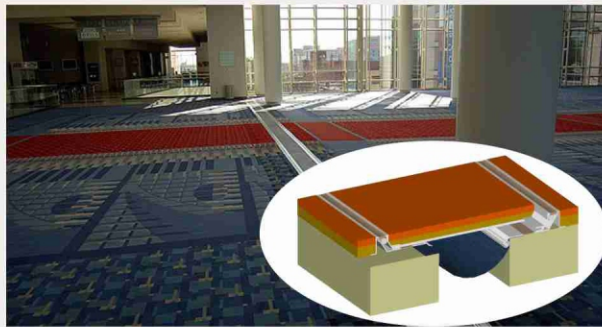


Dimension chart				
Model	Opening @Min	Opening @Mid	Opening @Max	Total Movement
SFJX -200	35mm	51mm	76mm	41mm
SFJX -400	35mm	102mm	151mm	116mm
SAPX-600	35mm	152mm	229mm	194mm
SFJX -800	35mm	202mm	305mm	270mm
SFJX -1000	35mm	252mm	351mm	316mm

The SFJX model has designed for floor to floor and floor to wall location for new and old construction. Top plate shall be flush mounted and available with serration and plain plate. Top plates are available in Aluminum and Stainless steel. The self-centering seismic devices allow the slide plate to return to its natural position after a seismic occurrence.

Features	Benefits	Recommended For
<ul style="list-style-type: none"> ➤ Multidirectional movement ➤ Accommodates wide openings ➤ Variable materials ➤ Design flexibility 	<ul style="list-style-type: none"> ➤ System maintains functionality during seismic events. ➤ Standard systems designed for joint openings up to 27 inches. ➤ Aluminum or stainless steel versions are available. ➤ Custom solutions can be created for job specific requirements. 	<ul style="list-style-type: none"> ➤ Malls, Hotels, Hospitals, residential buildings & Commercial Hub. ➤ Interior horizontal expansion control systems. ➤ For use in various construction projects including ➤ Convention centers with wider joint openings. ➤ Designs that require Multi-Directional seismic movement.

SDPS- SYSTEM



Dimension chart		
System Model	Joint Opening	Total Movement
SDPS -400	100mm	±50mm
SDPS -600	150mm	±75mm
SDPS -800	200mm	±100mm
SDPS -1000	250mm	±125mm
SDPS -1200	300mm	±150mm

The SDPS model is durable for interior floor location of expansion control system capable to accommodate Multidirectional, thermal and seismic movement. It is easy to install and flush with floor finish. Centre plate is deep recessed to receive floor finish.

Features

- Multidirectional movement
- Accommodates wide openings
- Variable materials
- Design flexibility

Benefits

- System maintains functionality during seismic events.
- Standard systems designed for joint openings up to 27 inches.
- Aluminum or stainless steel versions are available.
- Custom solutions can be created for job specific requirements.

Recommended For

- Malls, Hotels, Hospitals, residential buildings & Commercial Hub.
- Interior horizontal expansion control systems.
- For use in various construction projects including.
- Convention centers with wider joint openings.
- Designs that require multi-directional seismic movement.

SDPK- SYSTEM



Dimension chart				
Model	Opening @Min	Opening @Mid	Opening @Max	Total Movement
SDPK-200	12mm	50mm	88mm	76mm
SDPK-400	50mm	100mm	150mm	100mm

The SDPK system has designed to accommodate complete moment of structure. Top plate is designed with serration for anti skid purpose. No expose fasteners.

Features

- Multidirectional movement
- Accommodates wide openings
- Variable materials
- Design flexibility

Benefits

- System maintains functionality during seismic events.
- Standard systems designed for joint openings up to 27 inches.
- Aluminum or stainless steel versions are available.
- Custom solutions can be created for job specific requirements.

Recommended For

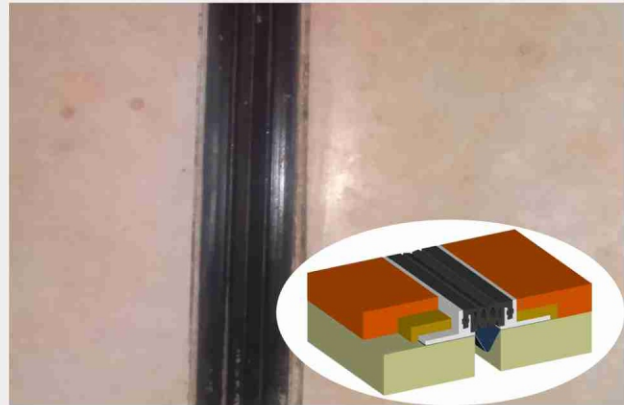
- Malls, Hotels, Hospitals, residential buildings & Commercial Hub.
- Interior horizontal expansion control systems.
- For use in various construction projects including.
- Convention centers with wider joint openings.
- Designs that require multi-directional seismic movement.

SLPF- SYSTEM

Dimension chart

Model	Opening @Min	Opening @Mid	Opening @Max	Total Movement
SLPF-25	12mm	25mm	32mm	19mm
SLPF-50	25mm	51mm	64mm	38mm
SLPF-75	50mm	76mm	97mm	47mm

The SLPF system has designed to provide continuous Extruded Aluminum base frame at both side of joint to support Elastomeric seal. Elastomeric seal is available in option of colors to match the decor of floor finish.



Features

- Multidirectional movement
- Accommodates wide openings
- Variable materials
- Design flexibility

Benefits

- System maintains functionality during seismic events.
- Standard systems designed for joint openings up to 27 inches.
- Aluminum or stainless steel versions are available.
- Custom solutions can be created for job specific requirements.

Recommended For

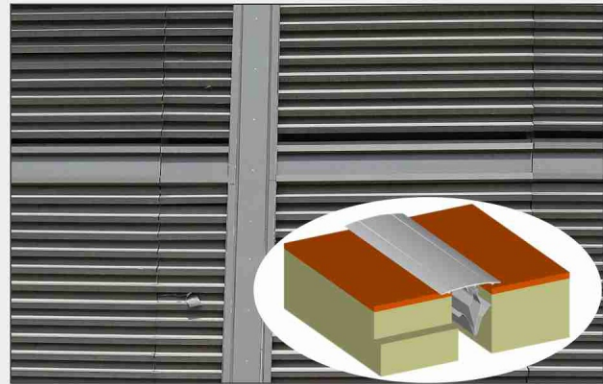
- Malls, Hotels, Hospitals, residential buildings & Commercial Hub.
- Interior horizontal expansion control systems.
- For use in various construction projects including.
- Convention centers with wider joint openings.
- Designs that require multi-directional seismic movement.

SA-90 RIGID JOINT SYSTEM

Dimension chart

Model	Opening @Min	Opening @Mid	Opening @Max	Total Movement
SA-70	20mm	25mm	35mm	15mm
SA-90	35mm	50mm	65mm	30mm
SA-140	60mm	75mm	130mm	70mm

The SA-90 Rigid Joint System has designed to fix over floor / wall / Ceiling location without exposing any fasteners, without damaging any floor / wall / Ceiling finish. It can be fix with stainless steel clips. System shall be supplied in powder coating or in anodizing finish to match the décor.



Features

- Multidirectional movement
- Accommodates wide openings
- Variable materials
- Design flexibility

Benefits

- System maintains functionality during seismic events.
- Standard systems designed for joint openings up to 27 inches.
- Aluminum or stainless steel versions are available.
- Custom solutions can be created for job specific requirements.

Recommended For

- Malls, Hotels, Hospitals, residential buildings & Commercial Hub.
- Interior horizontal expansion control systems.
- For use in various construction projects including.
- Convention centers with wider joint openings.
- Designs that require multi-directional seismic movement.

PARKING / LANDSCAPE AREA EXPANSION JOINT SYSTEMS

AIRSEAL SYSTEM



Dimension chart				
Model	Opening @Min	Opening @Mid	Opening @Max	Total Movement
AIRSEAL-25V	12mm	25mm	38mm	25mm
AIRSEAL-50V	25mm	51mm	76mm	51mm
AIRSEAL-75V	38mm	76mm	114mm	76mm
AIRSEAL-100V	40mm	101mm	125mm	85mm

The Airseal system is a structural sealing joint comprised of Epdm / Neoprene profile, which is Air-pressurized and bonded with Epoxy Adhesive. Complete adhesion of the Epoxy with Airseal profile and structure shall be achieved due to air inflation during installation. Airseal is most durable, Versatile. Cost-effective and watertight system.

Features

- Multidirectional movement
- Accommodates wide openings
- Variable materials
- Design flexibility

Benefits

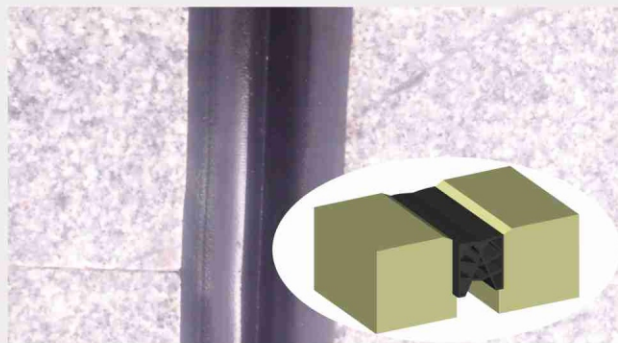
- System maintains functionality during seismic events.
- Standard systems designed for joint openings up to 27 inches.
- It is available in Epdm & Neoprene.

Recommended For

- Podium, Parking, Retaining Walls and roads for Malls, Hotels, Hospitals, residential buildings & Commercial Hub.
- Designs that require multi-directional seismic movement.

Compression Seal –System:

(I)WA SERIES



Dimension chart				
Model No	Opening @ Min	Opening @ Mid	Opening @ Max	Total Movement
WA-175	17	25	38	21
WA-250	25	38	54	29

The Multiweb compression seal has designed to accommodate thermal, seismic and traffic moment. Seal shall be supplied in EPDM profile.

Features

- Multidirectional movement
- Accommodates wide openings
- Variable materials
- Design flexibility

Benefits

- System maintains functionality during seismic events.
- Standard systems designed for joint openings up to 27 inches.
- Aluminum or stainless steel versions are available.
- Custom solutions can be created for job specific requirements.

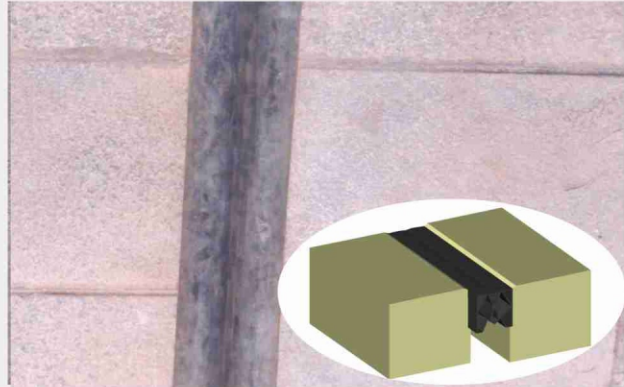
Recommended For

- Podium, Parking, Retaining Walls and roads for Malls, Hotels, Hospitals, residential buildings & Commercial Hub.
- Designs that require multi-directional seismic movement.

WG SERIES

Dimension Chart				
Model No	Opening @ Min	Opening @ Mid	Opening @ Max	Total Movement
WG400	42	65	86	44

The Multi web compression seal has designed to accommodate thermal, seismic and traffic moment. Seal shall be supplied in EPDM profile.

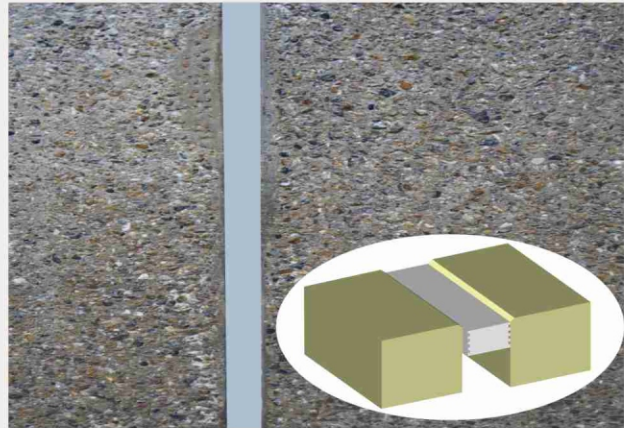


Features	Benefits	Recommended For
<ul style="list-style-type: none"> ➤ Multidirectional movement ➤ Accommodates wide openings ➤ Variable materials ➤ Design flexibility 	<ul style="list-style-type: none"> ➤ System maintains functionality during seismic events. ➤ Standard systems designed for joint openings up to 27 inches. ➤ Aluminum or stainless steel versions are available. ➤ Custom solutions can be created for job specific requirements. 	<ul style="list-style-type: none"> ➤ Podium, Parking, Retaining Walls and roads for Malls, Hotels, Hospitals, residential buildings & Commercial Hub. ➤ Designs that require Multi-Directional seismic movement.

METAZEAL

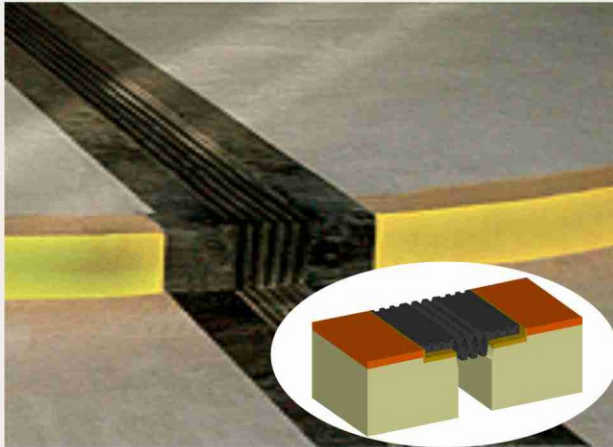
Dimension chart			
Model	Joint Opening	Size (Width x Depth)	Total Movement
MZ-125	25mm	32x50 mm	16-40
MZ-250	51mm	64x50 mm	32-90
MZ-375	76mm	95x50 mm	48-120
MZ-500	102mm	127x50 mm	64-160

Metazeal is a UV stable, pre-formed closed-cell low-density Polyethylene foam joint seal. Metazeal has a higher maximum operating temperature, 212 F when compared to other pre-formed closed cell foam solution. Metazeal can be installed in Ponding/ stating water. It is safe for use in potable and processed water application.



Features	Benefits	Recommended For
<ul style="list-style-type: none"> ➤ Multidirectional movement ➤ Accommodates wide openings ➤ Variable materials ➤ Design flexibility 	<ul style="list-style-type: none"> ➤ System maintains functionality during seismic events. ➤ Standard systems designed for joint openings up to 27 inches. ➤ Aluminum or stainless steel versions are available. ➤ Custom solutions can be created for job specific requirements. 	<ul style="list-style-type: none"> ➤ Podium, Parking, Retaining Walls and roads for Malls, Hotels, Hospitals, residential buildings & Commercial Hub. ➤ Bridge deck, Commercial Hibs, Water treatment facilities and industrial facilities. ➤ Designs that require multi-directional seismic movement.

SPS SEAL



Dimension chart

Model	Opening @Min	"A" @Mid	"A" @Max	Total Movement
SPS-200	25mm	50mm	75mm	50mm
SPS-300	40mm	75mm	110mm	70mm
SPS-400	50mm	100mm	150mm	100mm

SPS Seal primarily comprise of an EPDM extrusion with expose width larger then Gap Width. Flange of SPS seal has designed to provide more contact surface for fixing for moment of heavy loading vehicle.

Features

- Multidirectional movement
- Accommodates wide openings
- Variable materials
- Design flexibility

Benefits

- System maintains functionality during seismic events.
- Standard systems designed for joint openings up to 27 inches.
- Aluminum or stainless steel versions are available.
- Custom solutions can be created for job specific requirements.

Recommended For

- Podium, Parking, Fire Tender moment & Roads for Malls, Hotels, Hospitals, residential buildings & Commercial Hub.
- Bridge deck, Commercial Hubs, Water treatment facilities and industrial facilities.
- Accommodate Construction variation in Gap Width.
- Easy to install. It is durable and resist wear & tear of heavy vehicles.

SME SEAL



Dimension chart

Model	Opening @Min	Opening @Mid	Opening @Max	Total Movement	Shear Movement
SME-500	44mm	79 mm	127mm	83 mm	64mm

SME Seal primarily comprise of an EPDM extrusion with expose width larger then Gap Width. Flange of SPS seal has designed to provide more contact surface for fixing for moment of heavy loading vehicle.

Features

- Multidirectional movement
- Accommodates wide openings
- Variable materials
- Design flexibility

Benefits

- System maintains functionality during seismic events.
- Standard systems designed for joint openings up to 27 inches.
- Aluminum or stainless steel versions are available.
- Custom solutions can be created for job specific requirements.

Recommended For

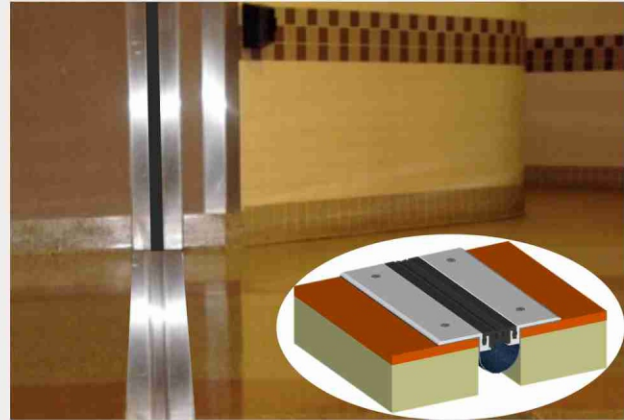
- Roofs, Podium, Parking, Fire Tender moment & Roads for Malls, Hotels, Hospitals, residential buildings & Commercial Hub.
- Bridge deck, Commercial Hubs, Water treatment facilities and industrial facilities.
- Accommodate Construction variation in Gap Width.
- Easy to install. It is durable and resist wear & tear of heavy vehicles.

WALL / COLUMN EXPANSION JOINT SYSTEMS

SLPP SYSTEM

Dimension chart				
Model	Opening @Min	Opening @Mid	Opening @Max	Total Movement
SLPF-25	13mm	25mm	32mm	19mm
SLPF-50	25mm	51mm	64mm	38mm
SLPF-75	50mm	76mm	97mm	47mm

The SLPP system has designed to provide continuous Extruded Aluminum base frame at both side of joint to support Elastomeric seal. Elastomeric seal is available in option of colors to match the decor of floor finish.



Features

- Multidirectional movement
- Accommodates wide openings
- Variable materials
- Design flexibility

Benefits

- System maintains functionality during seismic events.
- Standard systems designed for joint openings up to 27 inches.
- Aluminum or stainless steel versions are available.
- Custom solutions can be created for job specific requirements.

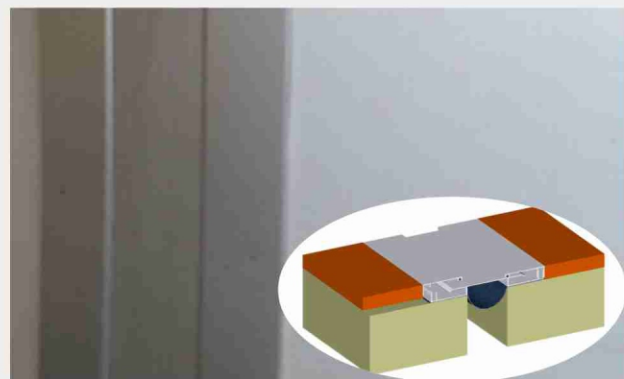
Recommended For

- Malls, Hotels, Hospitals, residential buildings & Commercial Hub.
- Interior horizontal expansion control systems.
- For use in various construction projects including.
- Convention centers with wider joint openings.
- Designs that require multi-directional seismic movement.

SNPK SYSTEM

Dimension chart				
Model	Opening @Min	Opening @Mid	Opening @Max	Total Movement
SNPK 200	16mm	50mm	84mm	35mm
SNPK 400	65mm	100mm	135mm	70mm

The SNPK system has designed to accommodate complete moment of structure. Top plate is designed with serration for anti skid purpose. No expose fasteners.



Features

- Multidirectional movement
- Accommodates wide openings
- Variable materials
- Design flexibility

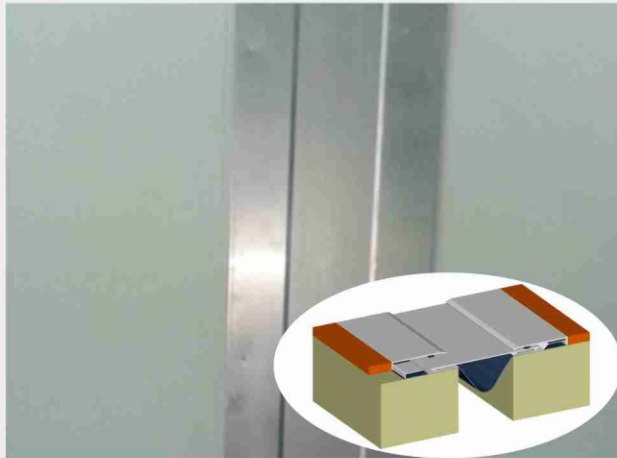
Benefits

- System maintains functionality during seismic events.
- Standard systems designed for joint openings up to 27 inches.
- Aluminum or stainless steel versions are available.
- Custom solutions can be created for job specific requirements.

Recommended For

- Malls, Hotels, Hospitals, residential buildings & Commercial Hub.
- Interior horizontal expansion control systems.
- For use in various construction projects including.
- Convention centers with wider joint openings.
- Designs that require multi-directional seismic movement.

SCTR SYSTEM



Dimension chart				
Model	Opening @Min	Opening @Mid	Opening @Max	Total Movement
SCTR-200	25mm	51mm	76mm	51mm
SCTR-400	35mm	102mm	152mm	117mm
SCTR-600	35mm	152mm	194mm	159mm
SCTR-800	35mm	202mm	257mm	222mm
SCTR-1000	35mm	252mm	321mm	286mm

Sanfield SCTR is a durable wall and ceiling expansion control system capable of accommodating multidirectional thermal and seismic movements. The aesthetically attractive system is engineered to minimize visible hardware and provides a flush finish with adjacent wall and ceiling surfaces when installed in standard 15 mm gypsum wallboard construction.

Features

- Multidirectional movement
- Accommodates wide openings
- Variable materials
- Design flexibility

Benefits

- System maintains functionality during seismic events.
- Standard systems designed for joint openings up to 27 inches.
- Aluminum or stainless steel versions are available.
- Custom solutions can be created for job specific requirements.

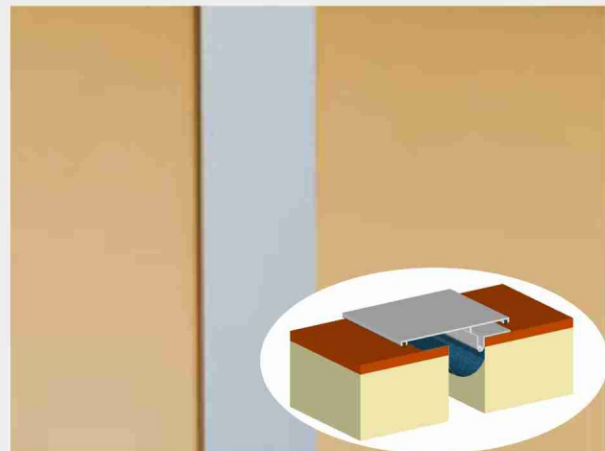
Recommended For

- Malls, Hotels, Hospitals, residential buildings & Commercial Hub.
- Interior horizontal expansion control systems.
- For use in various construction projects including.
- Convention centers with wider joint openings.
- Designs that require multi-directional seismic movement.

SNPG SYSTEM

Dimension chart				
Model	Opening @Min	Opening @Mid	Opening @Max	Total Movement
SNPG-200	13mm	50	87	74mm
SNPG-400	50mm	100mm	150mm	100mm
SNPG-600	75mm	150mm	225mm	150mm
SNPG-800	100mm	200mm	300mm	200mm
SNPG-1000	125mm	250mm	375mm	250mm

The SNPG/ SNJG model are designed to provide continuous extruded cover plate snap-locked to base frame. Cover plate to be fixed with continuous seal at both end of top plate. Top plate shall be supplied in various colors by Powder Coating or Anodizing to match décor.



Features

- Multidirectional movement
- Accommodates wide openings
- Variable materials
- Design flexibility

Benefits

- System maintains functionality during seismic events
- Standard systems designed for joint openings up to 27 inches.
- Aluminum or stainless steel versions are available.
- Custom solutions can be created for job specific requirements.

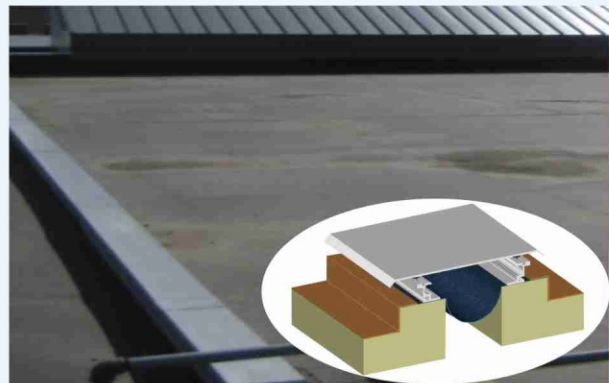
Recommended For

- Malls, Hotels, Hospitals, residential buildings & Commercial Hub.
- Interior horizontal expansion control systems.
- For use in various construction projects including.
- Convention centers with wider joint openings.
- Design that require Multi-Directional Seismic movements.

ROOF EXPANSION JOINT SYSTEMS

SRFL SYSTEM

Dimension chart				
Model	Opening @Min	Opening @Mid	Opening @Max	Total Movement
SRFL-200	6mm	51mm	76mm	70mm
SRFL-400	6mm	102mm	152mm	146mm
SRFL-600	6mm	152mm	229mm	223mm
SRFL-800	6mm	202mm	305mm	299mm
SRFL-1000	6mm	252mm	381mm	375mm



SRFL Architectural Expansion Joint System is capable to accommodate multi – directional Seismic movement without stress to its components. Aluminum Roof Cover is engineered for flat or sloped roofs with expansion joints subjected to thermal & seismic movement. They handle ice, snow loads & occasional maintenance foot traffic while providing maximum resistance to UV rays & moisture deterioration. The SRFL System's Seismic self – centering devices allow the slide plate to return to its natural position after a seismic occurrence.

Features	Benefits	Recommended For
<ul style="list-style-type: none"> ➤ Multidirectional movement ➤ Accommodates wide openings ➤ Variable materials ➤ Design flexibility 	<ul style="list-style-type: none"> ➤ System maintains functionality during seismic events. ➤ Standard systems designed for joint openings up to 27 inches. ➤ Aluminum or stainless steel versions are available. ➤ Custom solutions can be created for job specific requirements. 	<ul style="list-style-type: none"> ➤ Malls, Hotels, Hospitals, residential buildings & Commercial Hub. ➤ Interior horizontal expansion control systems. ➤ For use in various construction projects including. ➤ Convention centers with wider joint openings. ➤ Designs that require multi-directional seismic movement.

OUR CLIENTELE





BRINGING TECHNOLOGIES TOGETHER



DWI-CERMABIT WATERPROOFING

Sanfield [India] Limited.

Expansion Joints, Bridge Bearings, Rehabilitation of structures,
Structural Protection Systems, Pre Stressing Systems, Bar Splicing

CONTACT

HEAD OFFICE BHOPAL
13-A & 12-D - Sector-D
Industrial Area, Govindpura,
Bhopal - 462 023, India.
Tel : 0755-4233535 (30 Lines)
26062661/662
Fax : 0755-4270730,
sanfield@sanfieldindia.in

DELHI OFFICE
B-7, 2nd Floor, South Extension - II,
New Delhi - 110 049
Tel : 011- 46026903
sanfielddelhi@sanfieldindia.in

MUMBAI OFFICE
Hind Saurashtra Industrial Co-op.
Society Ltd.
Unit No. B-17, Marol Naka,
Andheri Kurla Road,
Andheri (E) Mumbai - 400059
Tel.: 022-28500275/276
sanfieldmumbai@sanfieldindia.in

AHMEDABAD sanfieldahmedabad@sanfieldindia.in +918980314418	BANGALORE sanfieldbangalore@sanfieldindia.in +9180500 10502	CHENNAI sanfieldchennai@sanfieldindia.in +919840165062
HYDERABAD sanfieldhyderabad@sanfieldindia.in +919977271110	PUNE sanfieldpune@sanfieldindia.in +91 7722089602	